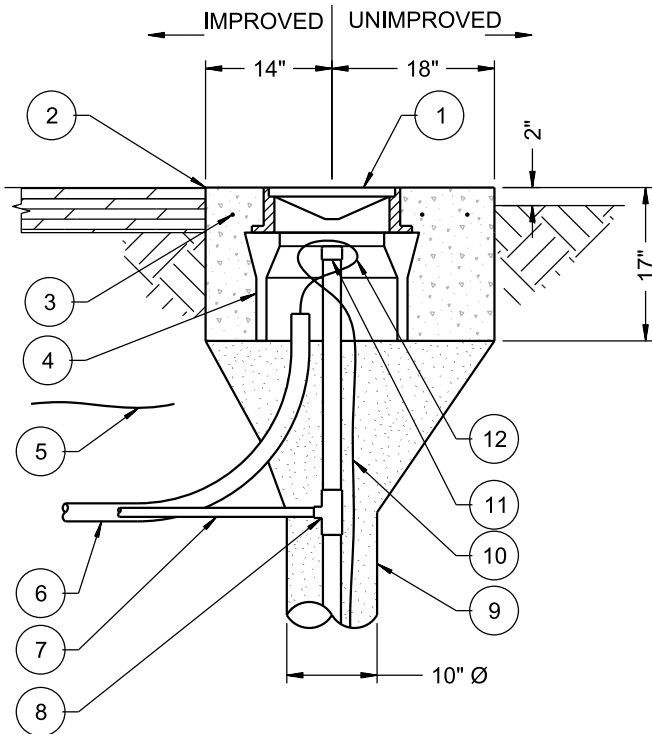


**ANODE WELLHEAD COVER**

**MATERIAL LIST:**

- 1 ANODE WELLHEAD VAULT COVER AND GRADE RING MARKED AS SHOWN WITH 1/2" HIGH LETTERING, SOUTH BAY FOUNDRY MODEL NO. 1243 OR APPROVED EQUAL
- 2 STEEL REINFORCED CONCRETE COLLAR
- 3 #3 REBAR (TYP)
- 4 REINFORCED CONCRETE BOX EXTENSION, CHRISTY G12X12 OR APPROVED EQUAL
- 5 6" WIDE RED PLASTIC WARNING TAPE
- 6 2" Ø SCH 40 ELECT PVC CONDUIT WITH CHAFFING BUSHING AND ANODE LEAD WIRES ROUTED TO RECTIFIER
- 7 1" Ø SCH 40 PVC VENT PIPE ROUTED TO RECTIFIER
- 8 SCH 40 PVC VENT PIPE TEE 2" x 2" x 1"
- 9 GROUT SEAL
- 10 #8 AWG HMWPE/HALAR ANODE LEAD WIRES
- 11 2" Ø SCH 40 PVC THREADED CAP - DO NOT GLUE
- 12 18" ANODE LEAD SLACK WIRE LOOPED IN VAULT



REVISION	BY	APPROVED	DATE
ORIGINAL	EF	J. NAGELVOORT	10'19

CITY OF SAN DIEGO – STANDARD DRAWING

**IMPRESSED CURRENT  
ANODE WELLHEAD**

RECOMMENDED BY THE CITY  
OF SAN DIEGO STANDARDS COMMITTEE

*CA Dzunga* 10/10/19  
COORDINATOR R.C.E. 56523 DATE

DRAWING NUMBER **SDW-180**