

**Save Our Heritage Organisation Comments:  
South Park Historic District Non-Contributors to Include  
September 28, 2017**

**GROUP 1**

**ADDRESS**

**CONCERNS**

**JUSTIFICATION**

1. 1525 28<sup>th</sup> St

porch enclosure  
asbestos siding  
two-story rear addition

historic change/reversible  
temporary material change/reversible  
meets SOIStandards



2. 1545 28<sup>th</sup> St

replaced window  
ADA ramp

uncertain replaced (current wood sash)  
temporary, no fabric lost



3. 1333 29<sup>th</sup> St

second floor apt/addition  
asbestos siding

minimal impact/meets SOIStandards  
temporary material change/reversible



4. 1360 29<sup>th</sup> St

vinyl windows/one opening altered  
porch enclosure

minimal impact/reversible  
historic change/reversible



5. 1421 29<sup>th</sup> St

porch enclosure  
stucco at front  
side replacement windows

historic change/reversible  
minimal impact/reversible  
minimal impact/reversible



6. 1446 29<sup>th</sup> St

asphalt shingle siding  
reconstructed garage into 2-bays

temporary material change/reversible  
minimal impact/accessory structure



7. 1403 30<sup>th</sup> St

altered stucco/asbestos change  
tile trim roof  
possible window alterations

minimal impact/temporary material change  
reversible  
still contextual to historic district



8. 1427 30<sup>th</sup> St

porch enclosure  
1948 & 1950 additions  
convert into two-family

historic change/reversible  
historic change  
minimal impact



9. 1530 30<sup>th</sup> St

asbestos siding  
porch column modifications

temporary material change/reversible  
minimal impact/reversible



10. 1703 30<sup>th</sup> St

porch enclosure

historic change/reversible



11. 1727 30<sup>th</sup> St      alum siding  
porch enclosure      temporary material change/reversible  
historic change/reversible

12. 1743 30<sup>th</sup> St      windows replaced  
altered window openings      minimal impact  
original window trim visible



13. 1330 31<sup>st</sup> St      asbestos siding  
porch enclosure      temporary material change/reversible  
historic change/reversible



14. 1506 31<sup>st</sup> St      beyond POS (1937)      contextual to district/expand POS?



15. 2812 Ash St      beyond POS (1936)      contextual to district/expand POS?



16. 2878 Beech St      lace stucco  
beyond POS (1936)      minimal impact/reversible  
contextual to district/expand POS?



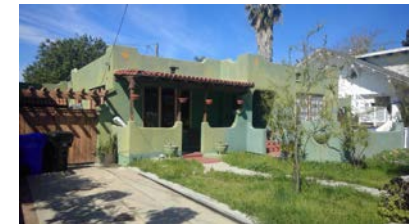
17. 3066 Cedar St      stucco above bay  
possible window modifications  
trellis addition      minimal impact/reversible  
still contextual to historic district  
minimal impact/still contextual



18. 1411 Dale St      asbestos siding  
chimney extension      temporary material change/reversible  
minimal impact



19. 1514 Dale St      re-stucco  
tile roof porch w knee wall      minimal impact  
rear addition (not visible to street) meets SOI Standards      contextual to historic district/reversible



20. 1614 Dale St      asbestos siding  
porch lights      temporary material change/reversible  
appurtenance/minimal impact



21. 1704 Dale St      asbestos siding  
garage enlarged      temporary material change/reversible  
minimal impact/accessory structure





22. 2919 Date St	siding/stucco side/rear additions	temporary material change/reversible meets SOIStandards
------------------	--------------------------------------	--

23. 1520 Fern St	replacement wood siding rear addition new windows at rear/side	contextual to district/minimal impact meets SOIStandards minimal impact
------------------	--	---



24. 1301 Granada	re-stucco possible porch reorientation	minimal impact/reversible still contextual/historic change
------------------	---	---



25. 1712 Granada	asbestos siding	temporary material change/reversible
------------------	-----------------	--------------------------------------



26. 1529 Grove St	replacement siding window surrounds removed	temporary material change/reversible surrounds located beneath current
-------------------	--	---



27. 1619 Grove St	windows replaced in openings south side & rear additions chimney modification	minimal impact/reversible meets SOI Standards minimal impact
-------------------	---	--

**GROUP 2  
ADDRESS**

1. 1445 28<sup>th</sup> St

**CONCERNS**

remove original dormer  
construct shed dormer  
partial porch enclosure/deck

**JUSTIFICATION**

still contextual to historic district  
clearly an addition, still contextual  
reversible



2. 1415 29<sup>th</sup> St

covered porch addition  
2-story east massing  
possible eave/rafter addition  
Window replacements

still contextual to historic district  
historic change/still contextual  
still contextual/details unknown  
minimal impact/reversible



3. 1437 29<sup>th</sup> St

porch alterations  
possible replacement siding  
two-family conversion  
style changes

clearly modified/reversible  
still contextual/details unknown  
minimal impact  
historic change/style evolution



4. 1638 29<sup>th</sup> St

porch reconfiguration  
Asbestos shingle  
Replacement windows

historic change  
temporary material/reversible  
minimal impact/reversible



5. 1428 30<sup>th</sup> St                      front porch enlarged/enclosed                      historic change/still contextual  
roof extended over porch (c.1949) historic change/still contextual



6. 1536 31<sup>st</sup> St                      new porch                      still contextual/reversible



7. 2874 A St                      chimney add to front façade                      still contextual  
vinyl windows                      minimal impact



8. 2953 Beech St                      1930s & 1950s remodel                      historic change/still contextual



9. 2967 Beech St                      1950s rehab                      historic change  
modern rehab (c. 2013)                      more research/details uncovered?





10. 1420 Dale St	duplex conversion/window removal (1934) porch extension w gable cover sleeping porch enclosure	historic change historic change/still contextual historic change/still contextual
------------------	--	---

11. 1530 Dale St	siding replacement front porch mods second floor balcony	temporary material change/reversible still contextual/reversible still contextual/reversible
------------------	--	--



12. 1420 Granada	second floor porch enclosures (c. pre-1940) rounded shed roof (c.1940) recessed entry change (c.1940) entry porch mods (1990) removal 2 chimneys	historic change/still contextual historic change/still contextual historic change/still contextual clearly modified/reversible minimal impact
------------------	--	---



13. 1435 Granada	original porch enclosed new porch added c.1990s	historic change/still contextual reversible
------------------	--	--



14. 1547 Granada	siding replaced vinyl windows/new openings porch supports	still contextual/reversible minimal impact/very similar c reversible/minimal impact
------------------	---	---





