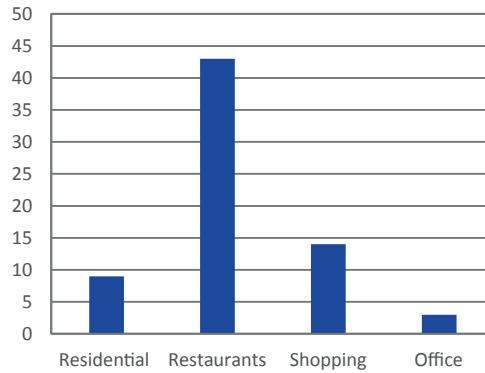




# PALM AVENUE REVITALIZATION PLAN

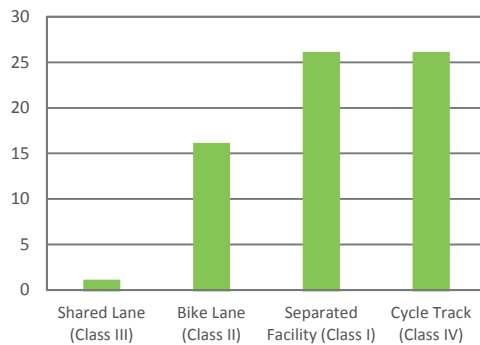
## What community members are saying about Palm Avenue...

What types of new land uses would you like to see along Palm Avenue?



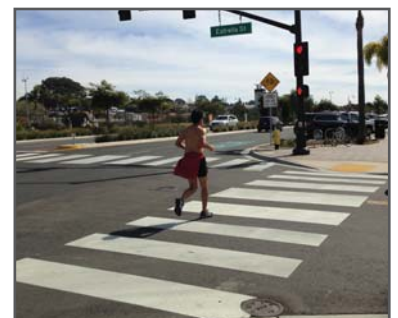
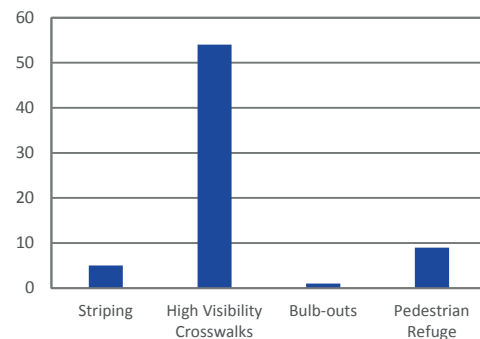
65% Indicated Restaurants

Which type of bikeway do you think is most suitable for Palm Avenue?



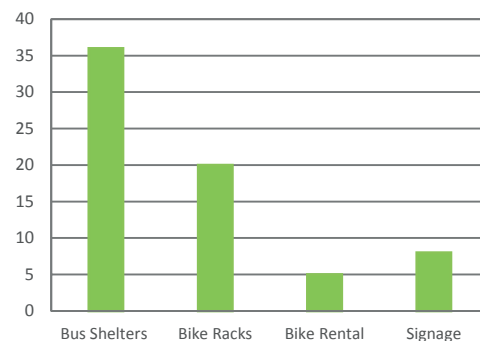
38% Indicated Class I or IV

Which types of pedestrian crossings do you think are needed along Palm Avenue?



78% Indicated High Visibility Crosswalks

Which kind of transit amenities do you think are most needed along Palm Avenue?



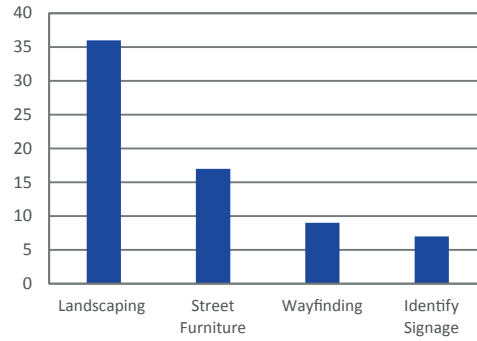
52% Indicated Bus Shelters



# PALM AVENUE REVITALIZATION PLAN

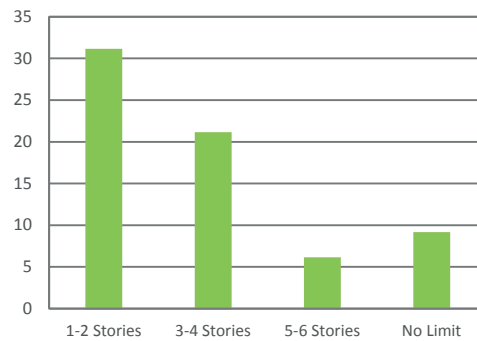
## What community members are saying about Palm Avenue...

Which kind of streetscape design features would you like to see along Palm Avenue?



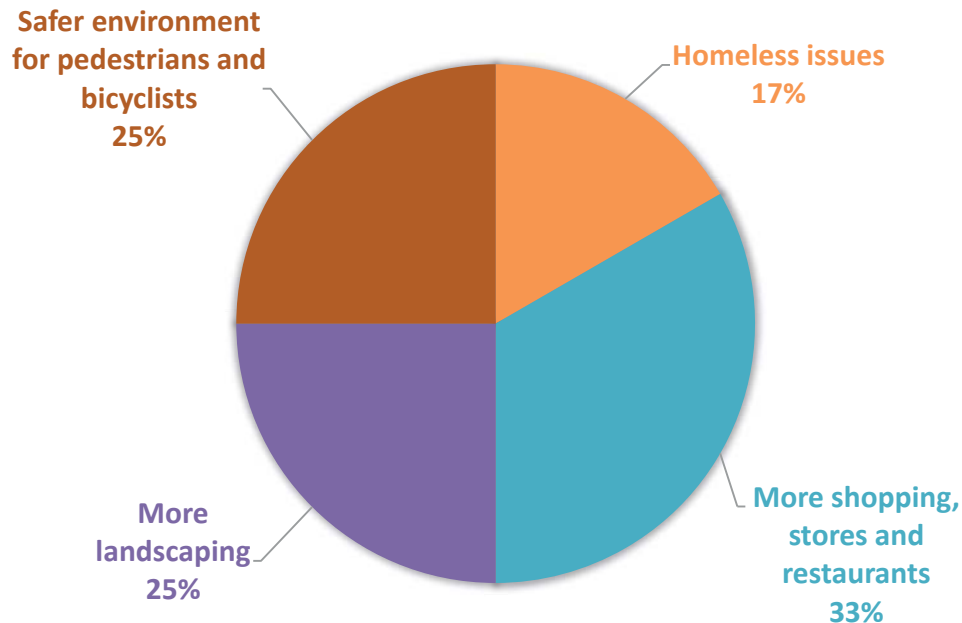
52% Indicated Landscaping

How tall should the tallest building be along Palm Avenue?



46% Indicated 1-2 Stories

Additional Comments:



# PALM AVENUE REVITALIZATION PLAN

## Community Workshop #1 - Summary of Input

### Visioning Station 1

#### What do you like about Palm Avenue?

- Plants in median
- Pond 20 fencing
- Uniform decoration, signage, vegetation
- Lots of old bars and hangouts are gone



#### What do you dislike about Palm Avenue?

- Crazy traffic; kids driving
- South San Diego and its citizens are too often ignored
- Intersection of Hollister and Palm Ave...Messy!
- School bus pickup on Palm Ave a little scary
- Disreputable businesses

#### What is your future vision Palm Avenue?

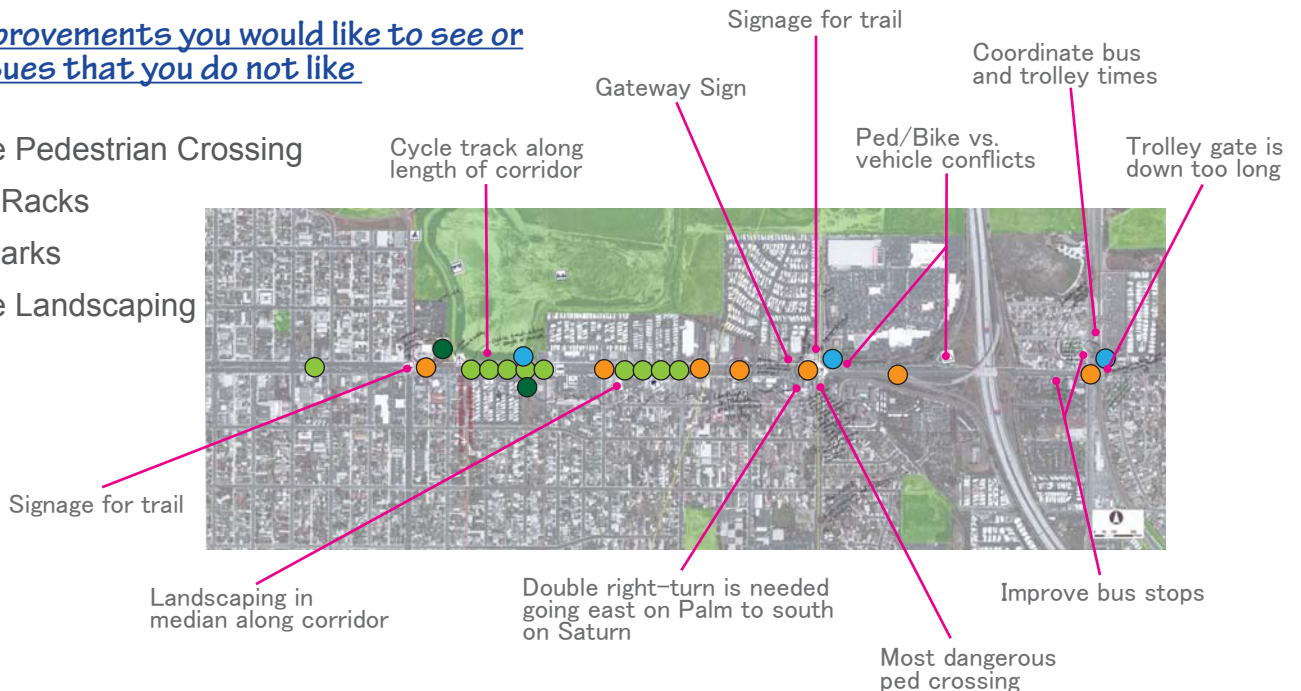
- Remove parking from Palm Avenue to side streets
- Xeriscaping, drought resistant trees in median
- Safe & sustainable Palm Avenue
- Improve pedestrian access from Saturn to Trolley
- Alternative entrance to Southland Plaza from I-5
- Traffic lanes not diminished in width or number
- Eliminate parking on Palm Avenue or on one side
- Consistent look from IB to Trolley
- Want walkable neighborhood uses
- Improved senior center & pool at Pond 20
- Wide sidewalks w/ peds separate from bikes, skateboards and cars
- Ped bridge over Palm Avenue
- Thematic signage
- Paved & colored cycle track
- More trash receptacles
- Speed limit control
- Less density
- Safer crossings
- More bike facilities



### Visioning Station 2

#### Identify improvements you would like to see or existing issues that you do not like

- Add/Improve Pedestrian Crossing
- Add Bicycle Racks
- Add Plaza/Parks
- Add/Improve Landscaping



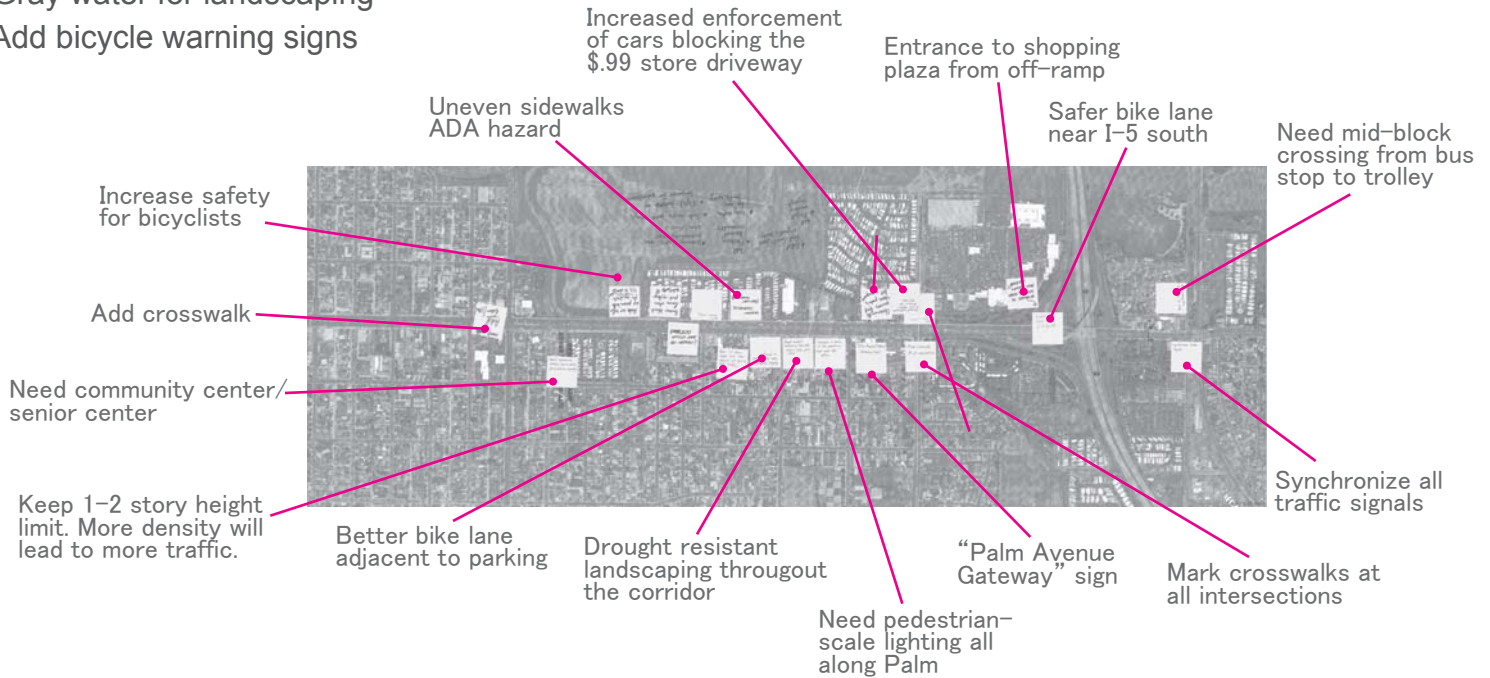
# PALM AVENUE REVITALIZATION PLAN

## Community Workshop #1 - Summary of Input

### Visioning Station 2 (continued)

#### General Comments:

- Add ped countdown signal heads
- Driveways are problematic for wheelchairs
- Add flashing beacon crosswalks
- Gray water for landscaping
- Add bicycle warning signs



### Visioning Station 3

“Streetmix” program displayed the existing variations between three Palm Avenue cross-sections

Participants were invited to alter the cross-sections to add/remove/change vehicle lanes, bike facilities, sidewalks, and building heights while using the existing curb-to-curb widths.

This activity helped participants envision what Palm Avenue could look like with different features and dimensions.

