



Photos:



Photo 30

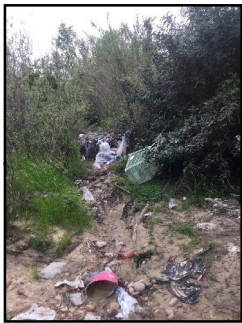


Photo 34



Photo 37



Photo 41



Photo 48

Assessment Results

- Channel Prioritization Score: 29.5 out of 100
- Capacity Prior to Maintenance: 25-year storm event
- Capacity After Maintenance (As-built Capacity) : 100-year storm event
- Clogging Potential: LOW
- Approximate Invasive Vegetation Coverage: HIGH
- Surrounding Area: Roads
- Infrastructure Failures: Slope failure
- Site Evaluation Date: March 24, 2018
- Notes/Comments: The channel contains multiple homeless encampments and a high amount of trash.