

# San Diego Police Department

## TRAINING BULLETIN

A PUBLICATION OF THE SAN DIEGO POLICE DEPARTMENT

DAVID NISLEIT  
CHIEF OF POLICE

21-01

February 23, 2021

### PANASONIC CF-33 VEHICLE DOCKING AND NETWORK CART STORING

#### I. PURPOSE

The purpose of this Training Bulletin is to demonstrate the proper handling of the Panasonic CF-33 2-in-1, docking the tablet inside of a vehicle, and storing/retrieval from a network cart.

#### II. BACKGROUND

On December 10, 2020, the San Diego Police Department changed its ruggedized tablet assignment process and inventory tracking process (Please refer to Department Order 20-44 for more information).

Previously, tablets were assigned to a specific vehicle. Due to the change, a predetermined number of tablets will be assigned to each area command and shall be the responsibility of that area command. All tablets will be available as “pool” equipment for staff assigned to the command to use. This includes two officer patrol “King” units, Field Training Officers assigned a trainee, detectives who are on-call or performing a follow-up in the field, or other assigned use at the direction of the commanding officer. While not in use, the tablets shall be docked in storage carts that will be installed at each station. The carts will recharge equipment batteries and will allow the tablets to receive necessary software updates.

The Panasonic CF-33, CF-20, FZ-M1, and Havis vehicle docking stations are leased through Panasonic for a three-year term. At the end of the lease, all equipment must be returned to Panasonic in working order. **If there is missing or damaged equipment, the Department will have to absorb the cost.**

#### III. SCOPE

This training bulletin applies to sworn and civilian personnel in a patrol function.

## IV. PROCEDURES

This brief training video and supporting documents can be found in the Resource Library inside of the “[Panasonic CF-33 Training](#)” folder.

### A. CF-33 Network Cart Storage

At the end of shift, leave the keyboard docked inside of the vehicle, complete a full shut down of the CF-33, unlock the tablet from the keyboard and pull the release lever (**Figure 1**), and use two hands and pull the tablet straight up out of the keyboard (**Figure 2**).



Figure 1

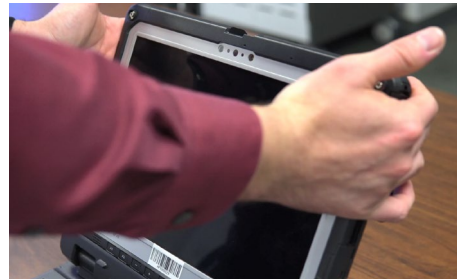


Figure 2

Inside of the substation, locate the tablet storage cart (**Figure 3**) and open both doors, on the CF-33, find the LAN port cover (**Figure 4**) and open it by moving it toward the white arrow and move it out exposing the port.



Figure 3

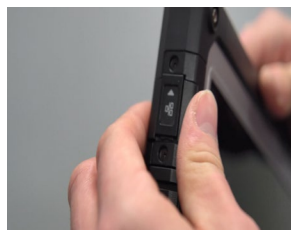


Figure 4



Figure 5

On the other side, locate the power connector port cover and open it by moving it toward the white arrow and move it out exposing the port (**Figure 6**), locate the blue LAN cable (**Figure 7**) in an empty bay and insert it into the tablet's LAN port. Please handle the LAN cable tab/clip carefully.



Figure 6

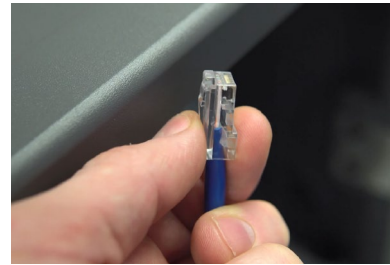


Figure 7

If the tab/clip breaks, the LAN connection won't be securely established. The LAN cable tab should be facing toward the screen. To ensure proper orientation, the "TOUGHBOOK" text should be facing toward your right when placed inside of the cart (**Figure 8**). Take the power cord from the same bay and plug it into the tablet (**Figure 9**). You can check the battery indicator light is on and the device is being charged (**Figure 10**). Close the doors on the cart.



Figure 8



Figure 9



Figure 10

## B. CF-33 Network Cart Retrieval

At the beginning of shift, locate the tablet storage cart inside of the substation and open both doors (**Figure 11**), carefully unplug the power connector, pull the tablet slowly toward you, and unplug the LAN cable by pressing on the clear tab and pulling outward. Please handle the tab/clip carefully, so it does not break (**Figure 12**). Place the power connector and LAN cable back to their corresponding slot in the cart. Close the LAN port and power port cover by pressing it down and move it in the opposite direction from the white arrow (**Figure 13**). Close the doors on the cart. Inside of the patrol vehicle, use two hands and dock the tablet onto the keyboard. Flip the lock switch upward on the keyboard to ensure the tablet is locked in place.



Figure 11



Figure 12



Figure 13

C. Reporting Damaged or Malfunctioning CF-33

If there is an issue with a singular CF-33 (**see commonly damaged areas below**), please call the Help Desk and have the ticket sent to on-site support. Leave the tablet on top of the cart with a note that includes the ticket number that was provided by the Help Desk.



**SDPD does not own these ruggedized devices. Panasonic can and will hold SDPD liable for damages. Please handle these devices with care.**

D. Transfer of Marked Patrol and PISO Vehicles to Other Commands

If a marked patrol or PISO vehicle is transferred from one command to another, ensure the keyboard and tablet portion of the CF-33 stays at the designated command, as these are individually serialized and accountable to the command, not the vehicle. The new command will supply their own issued CF-33 from their inventory.