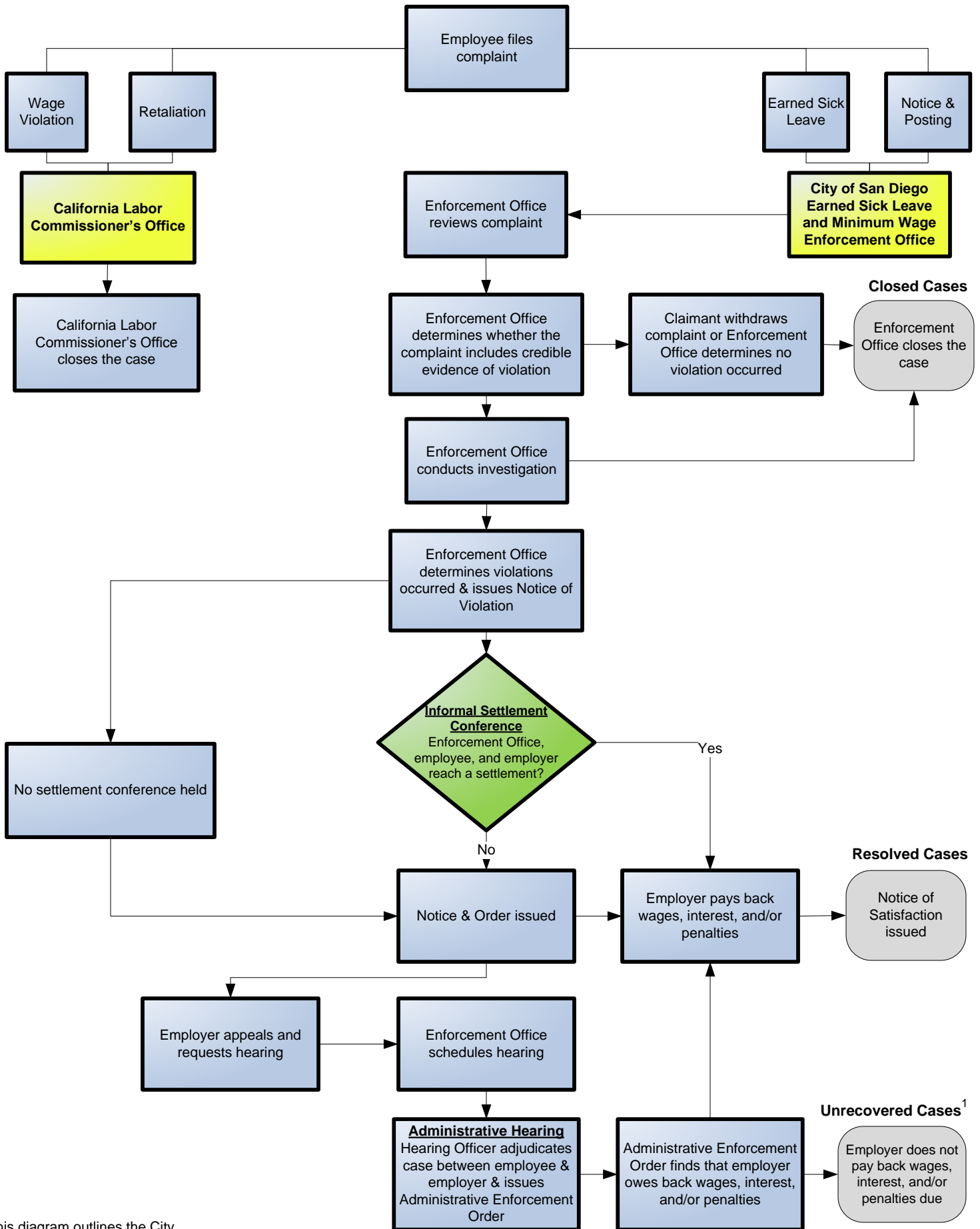


CITY OF SAN DIEGO EARNED SICK LEAVE AND MINIMUM WAGE ORDINANCE ENFORCEMENT PROCESS*



*This diagram outlines the City of San Diego Earned Sick Leave and Minimum Wage enforcement process. Some cases may deviate from this process.

¹ City of San Diego and/or employee may bring a cause of action against an employer in a court of competent jurisdiction to enforce the provisions of this Ordinance.