

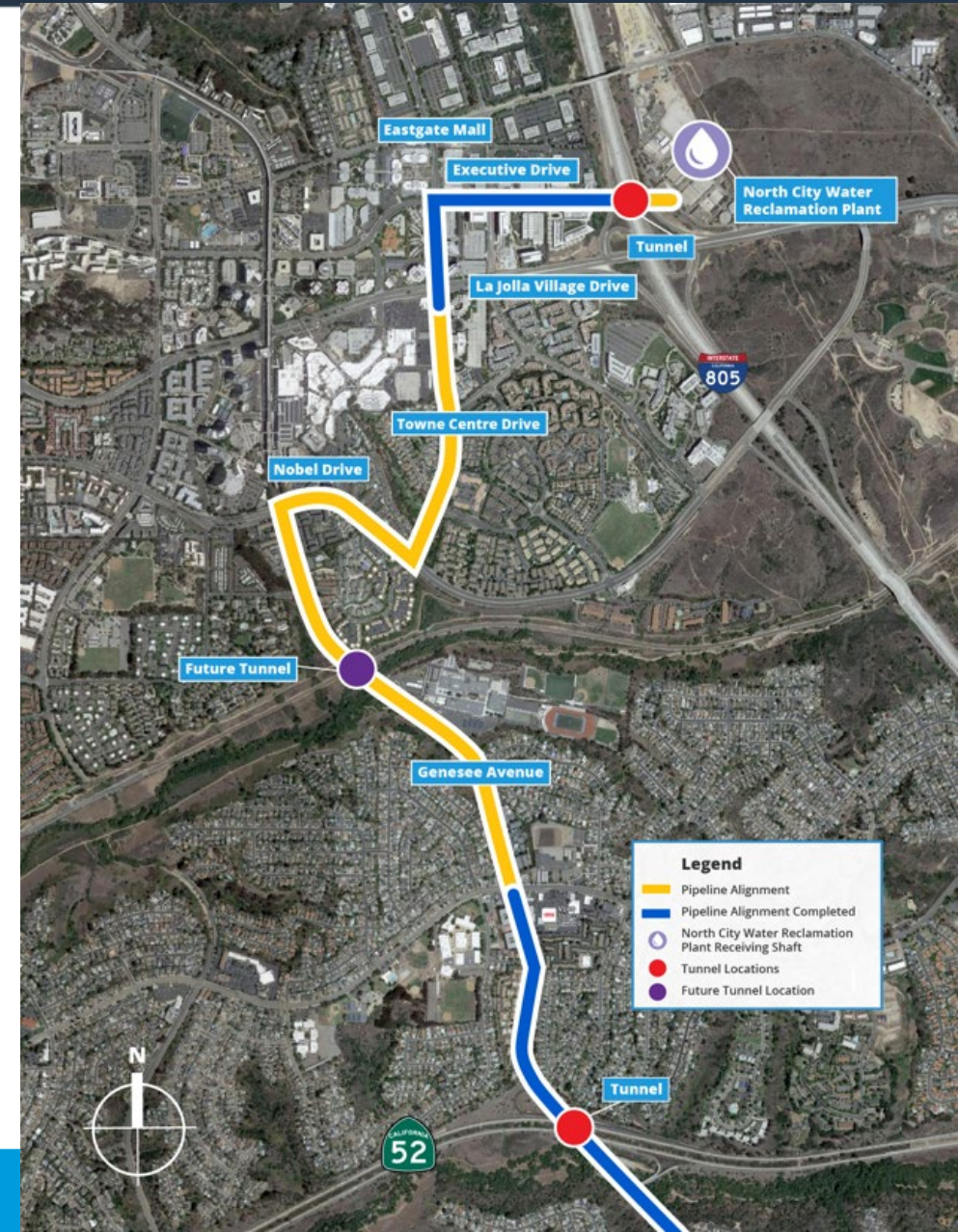
| Pure Water San Diego Morena Northern Pipelines & Tunnels Project Update

University City Community Association

*Clem Wassenberg
August 9, 2023*

SD Morena Northern Pipeline & Tunnels

- Two pipelines – from Genesee and Appleton to NCWRP
 - *One transports wastewater to NCWRP (N)*
 - *One transports brine from NCPWF to PLWTP (S)*
- Three short tunnels at SR-52, Rose Canyon (Genesee), and I-805
- 6,909 linear feet of pipeline and steel casing installed so far and 190 linear feet of tunnel
- Next major milestones:
 - *Governor Drive & Genesee Avenue intersection*
 - *Towne Centre Drive, south of La Jolla Village Drive*



Full Alignment: What You Can Expect

- Work will occur during daytime with occasional night work
 - *Monday-Friday, 7 a.m. to 5:30 p.m., occasional Saturday work, 8 a.m. to 4 p.m.*
 - *Night work through Governor Drive intersection, 8 p.m. to 5:30 a.m.*
- K-rail for safety of public and workers
 - *Access for residents, businesses and emergency vehicles will be maintained where possible; some delays expected*
- Construction equipment and material staging will be in work zone and will move along with construction
- Possible full time intersection closures and short-term closures due to weekend work
- Posted detours for traffic, and bike lanes, sidewalks
- Trails to remain open wherever possible
- No parking in construction zones
- Impacts such as noise, dust, bright lights and construction vehicle traffic during work hours



Current Work: North to South



I-805 Tunnel



I-805 Tunneling Operation

- I-805 tunnel work began in March 2023
- I-805 Launching Shaft: 105-foot depth
- I-805 Receiving Shaft: 95-foot depth
- Tunnel is 190 feet long





Executive Drive Construction





Executive Drive Construction





**Executive Drive & Towne
Centre Drive**

Towne Centre Drive

- Pipe installation was completed in front of Embassy Suites hotel between Executive Drive & La Jolla Village Drive
- Contractor proceeded on Towne Centre Drive south of La Jolla Village Drive intersection earlier this week





Towne Centre Drive





**Genesee Avenue from SR-52
to Governor Drive**

- Two crews working
- Crew 1: Casing installation at SR-52 (pictured)



- Crew 2: Pipe installation on Genesee Avenue between Radcliffe Lane and Governor Drive
- Work will be ongoing through Fall 2023





San Clemente Tunnel at SR-52 & Marian Bear Park

San Clemente Tunnel at Marian Bear Park

- Temporary closure of Marian Bear Park parking lot for public safety
- Construction is ongoing in the parking lot
- Marian Bear Park and Trails are open for use
 - *Alternate parking can be located at 5233 Regents Road*





Upcoming Work

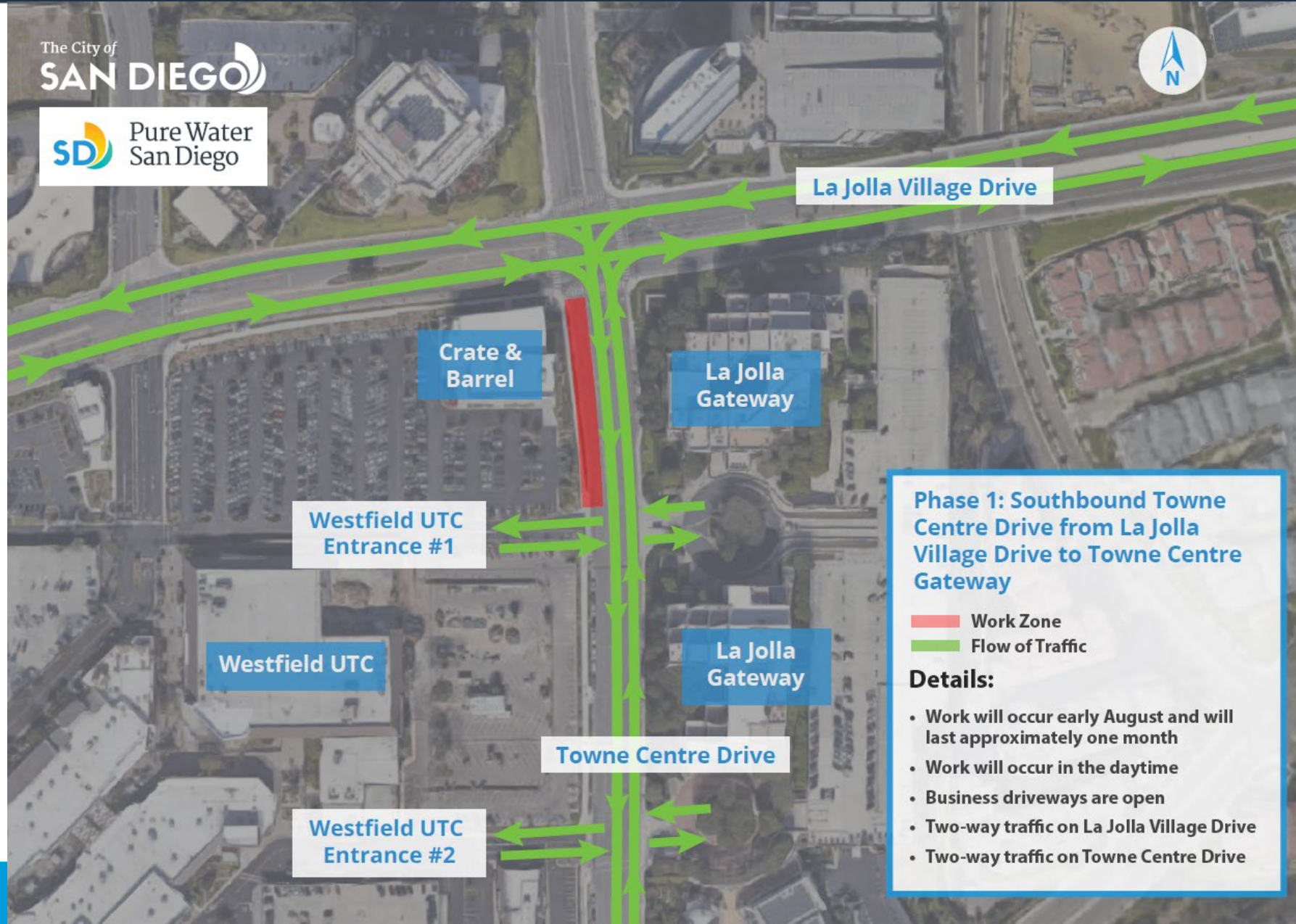


**Southbound Towne Centre
Drive from La Jolla Village Drive**



Construction Details: Southbound Towne Centre Drive

- **Work hours: Day work, 7:30 a.m.-5 p.m.**
- **Work has started**
- **Tentative completion of current phase: 30 days from start**

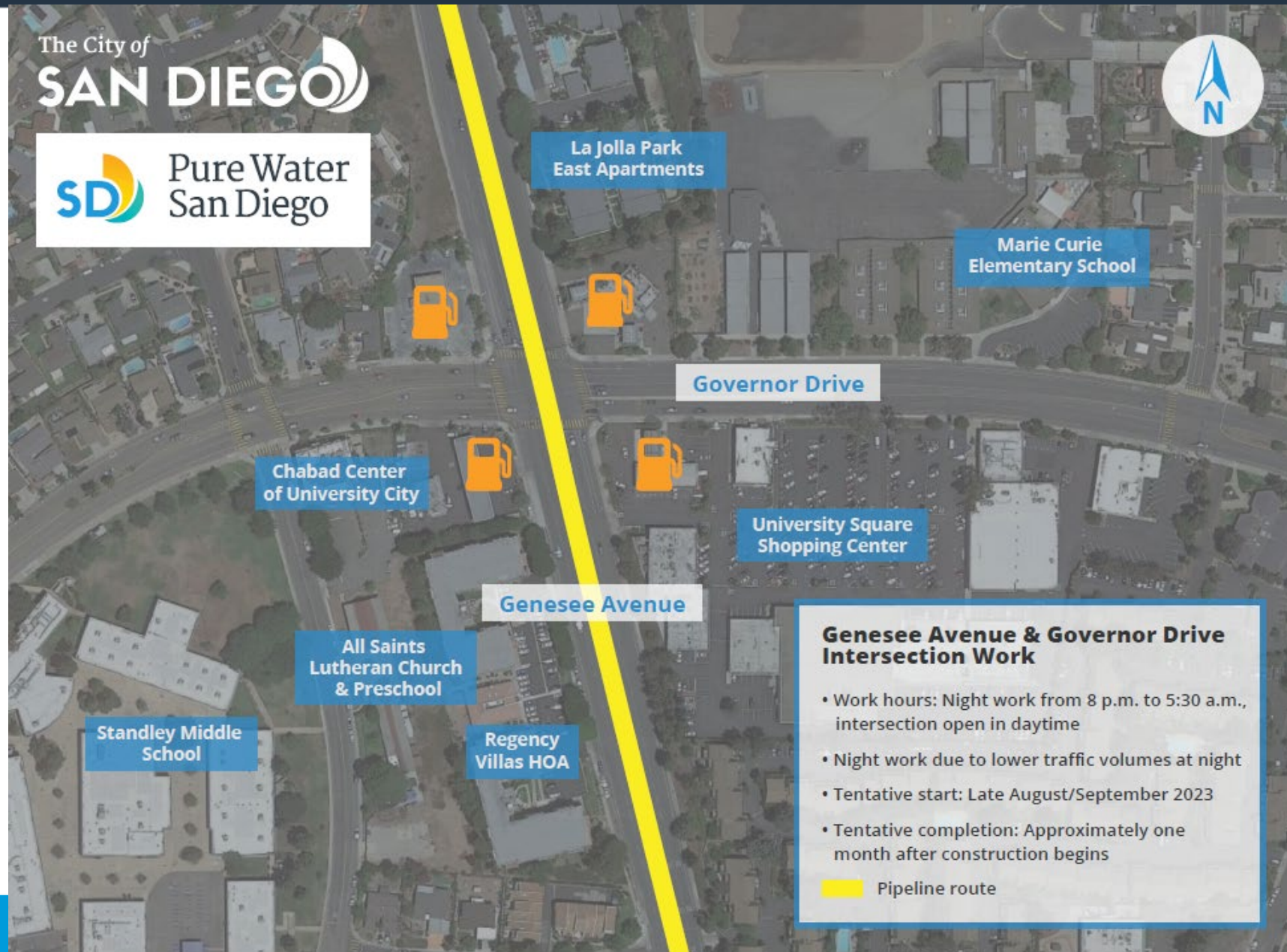




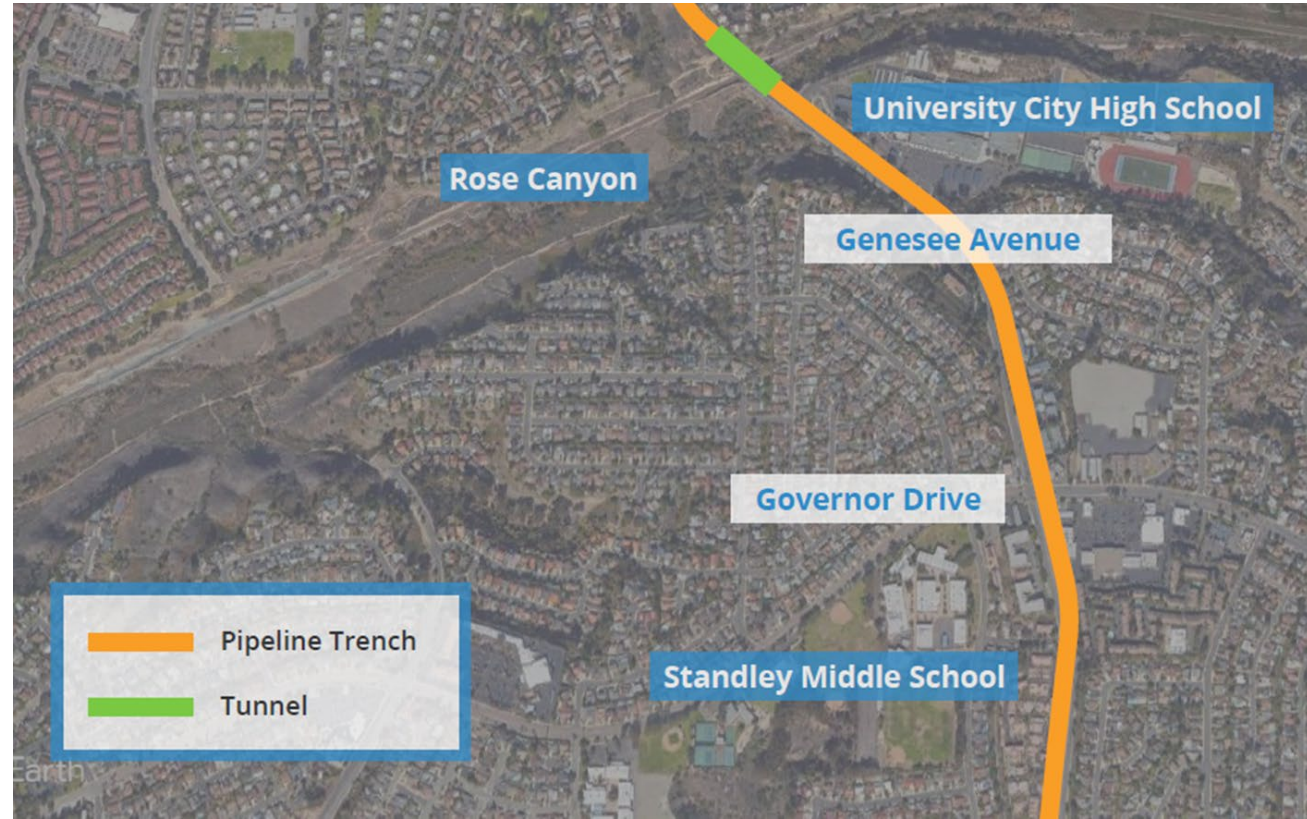
Genesee Avenue & Governor Drive Intersection

SD Construction Details: Genesee Ave & Governor Drive

- Work hours: Night work from 8 p.m. to 5:30 a.m.,
- Intersection open in the daytime and trench will be covered with steel plates
- Night work due to lower traffic volumes at night
- Tentative start: Late August/September 2023
- Traffic control: Modifications to signal timing, flaggers



- **Coordination Ongoing with UC High School, Westfield UTC, Irvine Company Properties**
- **Upcoming Meetings with Standley Middle School, Chabad Center of University City, University Square Shopping Center and more**
- **Monthly presentations to UCPG and UCCA**





Rose Canyon

SD Rose Canyon Tunneling Prep

- **Underground utility location**
- **Preparation work including ammunition surveys, bird surveys prior to clearing & grubbing around future tunnel site**
- **Work to happen on north side of railroad tracks**
- **Pipe will be tunneled**
- **Timing of Preliminary Work: Summer 2023**



**Sign up for E-blasts
(List #6):**



**Phone Line:
833-882-7973
833-UTC-PWSD**

Community Liaison: Sarah Bowles, sbowles@san Diego.gov



Questions?